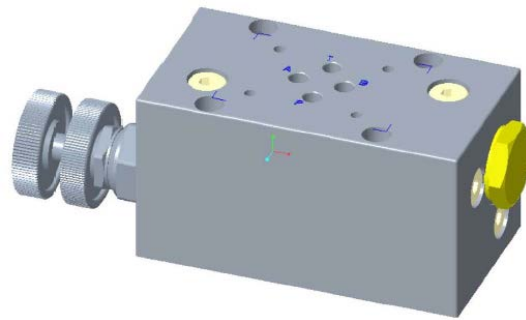
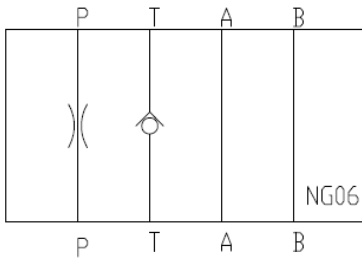


# 메인터넨스밸브 HJ 시리즈

뛰어난 호환성, 경쟁력 있는 가격, 빠른 납기 !!

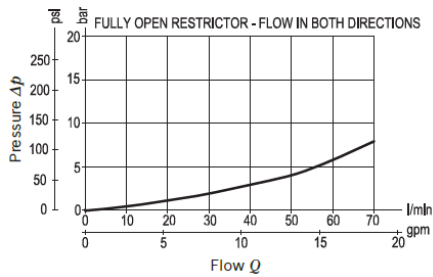


## Specifications (기본사양)

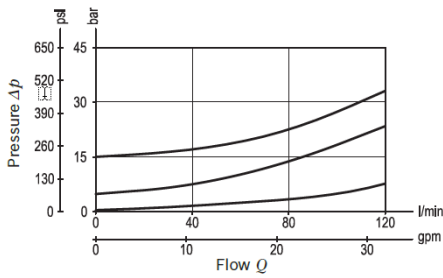
Item:	HJ-06	HJ-10	HJ-16	HJ-25	manufacturer
Max. working pressure (bar):	350	350	350	350	REXROTH
Max. flow (L/min):	70	120	320	600	REXROTH
주문번호:	R987391108	R987391143	R987494787	R987391221	REXROTH

기타 옵션 항목은 별도 문의.

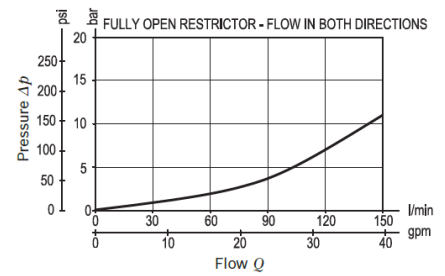
Characteristic curve



Characteristic curve



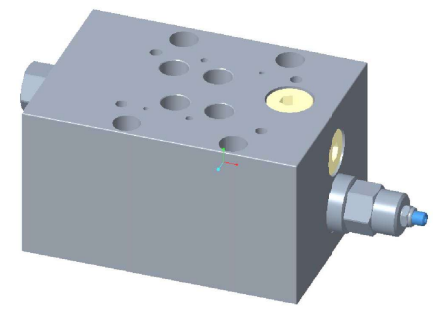
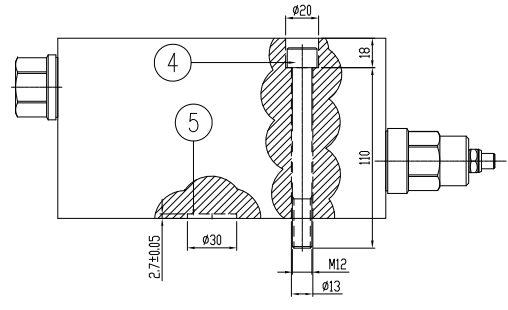
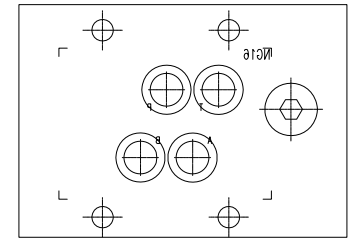
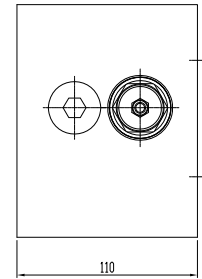
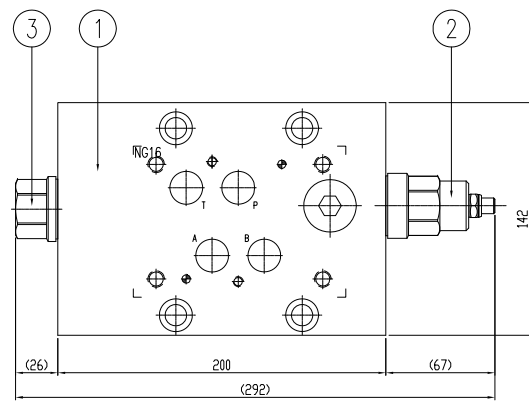
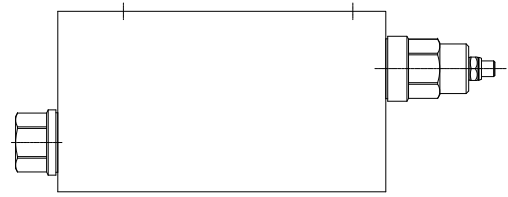
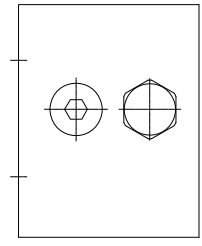
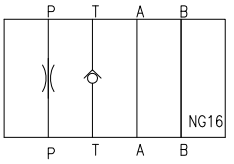
Characteristic curve



디지털 서명자 Hyunsik An  
 날짜: 2020.06.11 10:59:20  
 +09'00'

Diese Unterlage darf weder kopiert noch dritten Personen zugänglich gemacht werden. Schutzvermerk DIN34 beachten.  
 This document may not be copied or passed on to a third person. Copyright reserved  
 본 도면은 저작권이 복제 또는 전달 수 없습니다.

NO.	DESCRIPTION	PART NO.	SIZE	수량 QTY	재료 MATERIAL	비고 REMARKS
1	MANIFOLD	R987497788	135x185x400	1	GGG40	22.6kg
2	THROTTLE VALVE	-	LFED-LHN	1	-	17
3	CHECK VALVE	-	CXHA-XCN	1	-	-
4	WRENCH BOLT	-	M12x110L	4	-	-
5	O-RING	-	P24 O-RING	4	NBR	-



- \* Throttle valve = NFED-LHN (SUN)
- \* Check valve = CXHA-XCN (SUN)
- \* Maximum flow = 320 L/min.
- \* Maximum operating pressure = 350bar
- \* P Line : Maximum valve leakage at shutoff = less than 0.4 cc/min
- \* T Line : Maximum valve leakage = 0.07 cc/min

K/H/KO	H.S.AN	J.H.LEE	XXXXXX
Index	2020.06.11	2020.06.11	2020.06.11
Author	Created	Checked	Approved
Material	KS B ISO 1101	KS B ISO 1101	KS B ISO 1101
Weight	22.6		
Part no	R987497787		
Company	A Bosch Company		
Document	Design	Standard	Industrial Hydraulics
Scale	1:3	A3	AG027-TO00MT16-G-001-B

## 기타 주요 솔루션

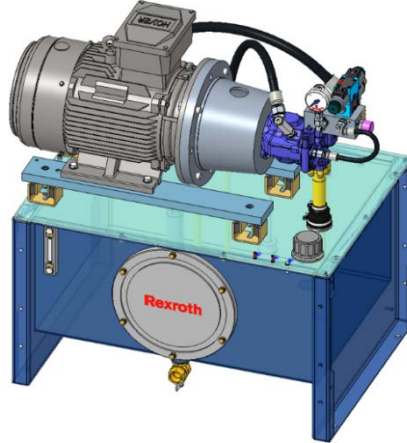
### 1. 가변속모터 솔루션! 싸이트로닉스! (Sytronix)

: 렉스로스 인버터 사용.



### 2. 스탠다드 유압파워유닛!

: 엔지니어링 비용을 절감하세요.



### 3. 인버터 내장형 HPU! 싸이트로박스! (CytoBox)

: 렉스로스 인버터 사용.



### 4. 인버터 내장형 소형 HPU! 싸이트로팩! (CytoPac)

: 렉스로스 인버터 사용.



#### **Bosch Rexroth Korea Ltd.**

부산시 강서구 미음산단 1로 29

[www.boschrexroth.co.kr](http://www.boschrexroth.co.kr)

Tel) 051-260-0765

E-mail) [info.sle@boschrexroth.co.kr](mailto:info.sle@boschrexroth.co.kr)

