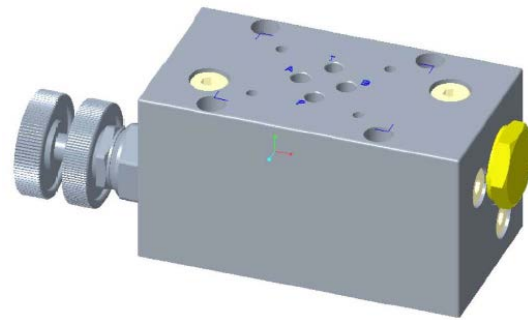
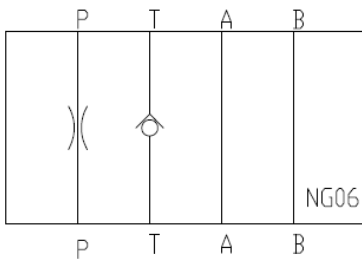


메인터넨스밸브 HJ 시리즈

뛰어난 호환성, 경쟁력 있는 가격, 빠른 납기 !!

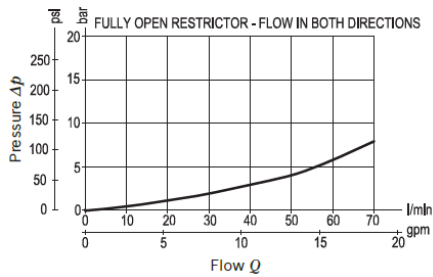


Specifications (기본사양)

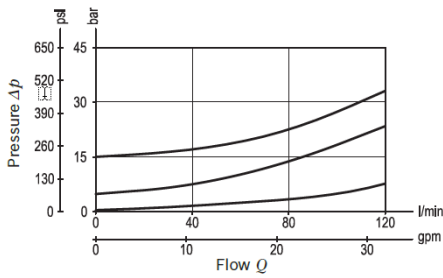
Item:	HJ-06	HJ-10	HJ-16	HJ-25	manufacturer
Max. working pressure (bar):	350	350	350	350	REXROTH
Max. flow (L/min):	70	120	320	600	REXROTH
주문번호:	R987391108	R987391143	R987494787	R987391221	REXROTH

기타 옵션 항목은 별도 문의.

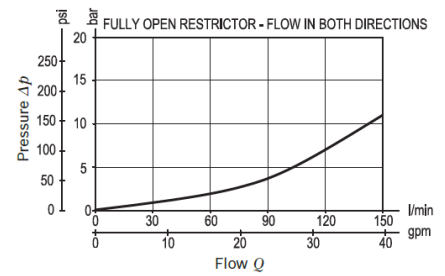
Characteristic curve



Characteristic curve



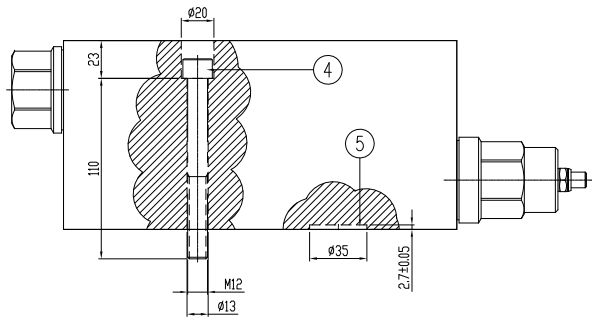
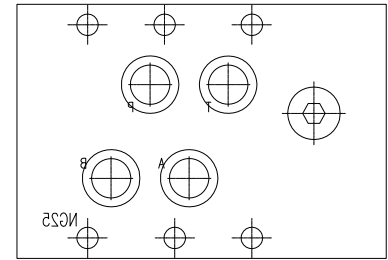
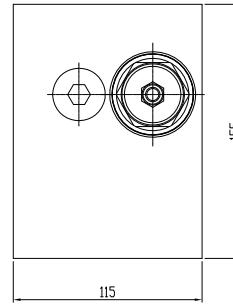
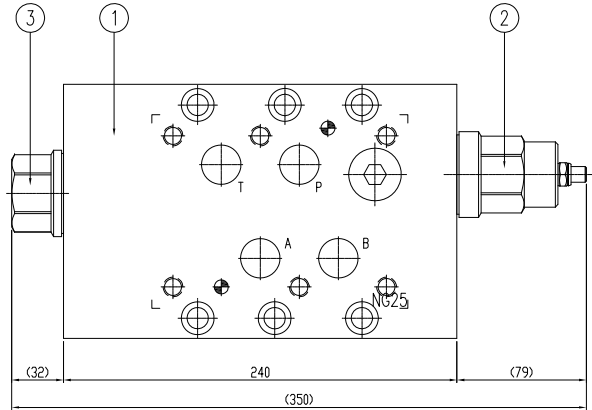
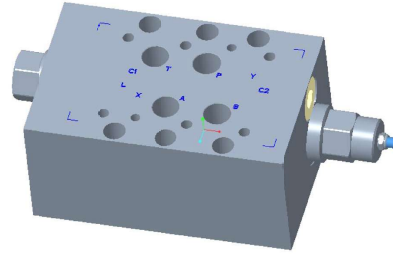
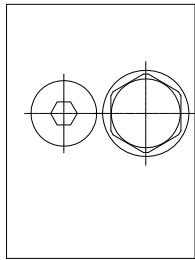
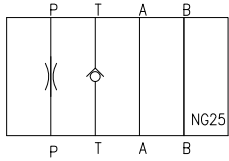
Characteristic curve



디지털서명자Hyunsik An
 날짜: 2020.06.11 13:35:11
 +0900

Diese Unterlage darf weder kopiert noch dritten Personen zugänglich gemacht werden. Schutzvermerk DIN34 beachten.
 This document may not be copied or passed on to a third person. Copyright reserved
 본 도면은 저작권이 복제 또는 전달될 수 없습니다.

NO.	품명 DESCRIPTION	품번 PART NO.	규격 SIZE	수량 QTY	재질 MATERIAL	비고 REMARKS
1	MANIFOLD	R987391088	135x185x400	1	GGG40	XXkg
2	THROTLR VALVE	-	NFFD-LIN	1	-	-
3	CHECK VALVE	-	CXJA-XCN	1	-	-
4	WRENCH BOLT	-	M12x110L	6	-	-
5	O-RING	-	P29 O-RING	4	-	-



- * Throttle valve = NFFD-LHN (SUN)
- * Check valve = CXJA-XCN (SUN)
- * Maximum flow = 640 L/min.
- * Maximum operating pressure = 350bar
- * P Line : Maximum valve leakage at shutoff = less than 0.4 cc/min
- * T Line : Maximum valve leakage = 0.07 cc/min
- * Wrench Bolt = 6-M12x110

K/H/KO 20h.xx.xx	H.S.AN 20h.xx.xx	J.H.LEE 20h.xx.xx	XXXXXX
Index #18/created	검/checked	승/approved	변경내용 / change note
일반표준 edge root KS A ISO 1315	일반표준 shape and position tolerance KS B ISO 1101	일반표준 welding symbol KS B ISO 1101	일반표준 general machining tolerances KS B ISO 2768-mk/CS A ISO 8015-mk Tolerierung/tolerances KS A ISO 8015-mk
표준/finished size 115x155x225	중량/weight (Without Valve) 23	부품번호/parts no R987391221	표면처리 KS A ISO 1302 KS A ISO 1302
고객/customer DCR	주문번호/orders order no N/A	재료/material descr./KS or DIN GGG40	표/Sheet:1 #*/set:1
#*/dept. Design	Document: 날/Date	이름/Name STANDARD MAINTENANCE NG25	업/Industry Industrial Hydraulics
작성/created 2020.06.09	작성/checked 2020.06.10	작성/checked 2020.06.11	비율/scale 1:3
승인/approved 2020.06.11	승인/checked 2020.06.11	승인/checked 2020.06.11	도면번호/drawing no. AG027-T000MT25-G-001-A
Index / A	첫번째판/first issue		

기타 주요 솔루션

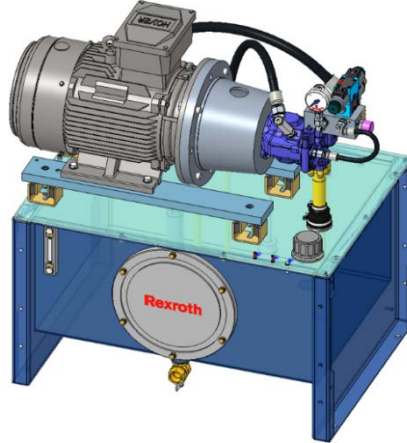
1. 가변속모터 솔루션! 싸이트로닉스! (Sytronix)

: 렉스로스 인버터 사용.



2. 스탠다드 유압파워유닛!

: 엔지니어링 비용을 절감하세요.



3. 인버터 내장형 HPU! 싸이트로박스! (CytoBox)

: 렉스로스 인버터 사용.



4. 인버터 내장형 소형 HPU! 싸이트로팩! (CytoPac)

: 렉스로스 인버터 사용.



Bosch Rexroth Korea Ltd.

부산시 강서구 미음산단 1로 29

www.boschrexroth.co.kr

Tel) 051-260-0765

E-mail) info.sle@boschrexroth.co.kr

